



**The Forum of Milan, which is today called Mediolanum Forum, opened in 1990 and is the main covered polyfunctional venue in the north of Italy.**

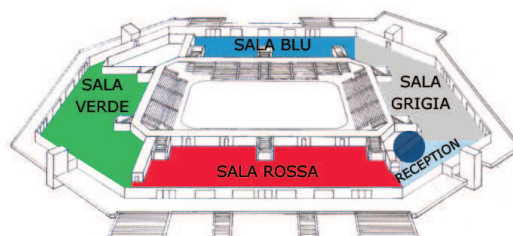
Along with the PalaLottomatica in Rome, which is also managed by the ForumNet Group, the Mediolanum Forum is the only Italian structure to be included in the prestigious EAA (European Arenas Association), which features the most important European arenas. The building is arranged over three floors and has a total area of 40,000 sqm. Thanks to its modularity and suitability for any type of event, over the years it has become a point of reference for the biggest international events, including concerts with the most famous artists, sporting events of primary importance, shows, conventions, fairs, exhibitions, competitions and television productions as well as smaller events, such as gala dinners and pre or after show activities. The Mediolanum Forum offers various internal spaces with different dimensions and characteristics. These can be used simultaneously or independently, as required by the type of event. As well as the Central Arena, the venue offers the Premium, Gallery and Gold Halls, the Quota Otto spaces and various external spaces. The Arena's upper tier (Quota Ventuno) hosts the "Sky Belvedere", a refined environment which directly overlooks the parterre and which can be exclusively reserved for press conferences, meetings and corporate hospitality activities. The Mediolanum Forum has ample dedicated parking facilities and will soon have a dedicated stop on Line 2 of the Milanese Underground.

# Mediolanum Forum

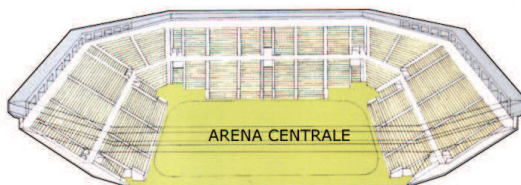
Via G. Di Vittorio, 6 - 20090 Assago (MI) - Tel. +39 02 488571 - Fax +39 02 48844898 - [www.forumnet.it](http://www.forumnet.it)

The Mediolanum Forum is situated at the junction between the A7 Milan-Genoa motorway and Milan's Tangenziale Ovest ring road, at the Milanofiori-Assago exit.

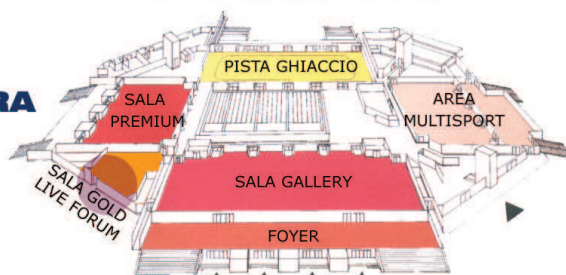
**2° LIVELLO**  
ANELLO QUOTA 8



**1° LIVELLO**  
ARENA CENTRALE



**PIANO TERRA**



PARK "B"

PARK "A"

**mediolanumforum**

P.A. SYSTEM

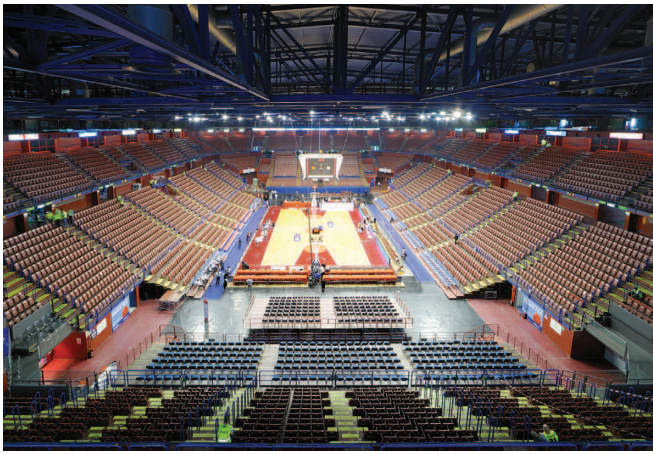
TEMPORARY TELEPHONE LINE CONNECTIONS

INTERNET CONNECTIONS: ADSL AND/OR WI/FI

SATELLITE SYSTEM

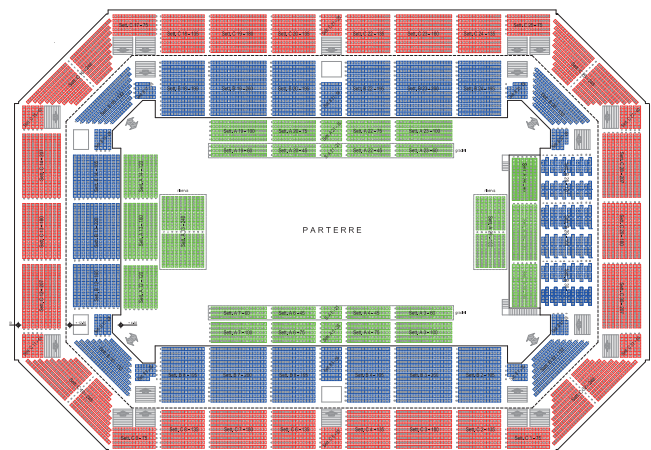
AIR CONDITIONING AND HEATING

PARKING: "A" 146 PLACES, "B" 833 PLACES, "C" 2,110 PAYING PLACES, S 156 PLACES



# Central Arena

## Mediolanum Forum



**PARTERRE AREA 2,808 SQM**

**HEIGHT 16.40 M**

**DIMENSIONS: PARTERRE WITH CLOSED STANDS 39X72 M;  
PARTERRE WITH OPEN STANDS 30X61 M ; 3 ENTRANCES  
+ 2 ESCALATORS**

**THE AREA CAN BE REDUCED THROUGH  
A BLACK STAGE CURTAIN**

**POSSIBILITY TO SUSPEND SOUND/OR LIGHTS:  
CAPACITY 350 KG/ML BEAM**

**MAXIMUM CAPACITY:12,700 PLACES**

### TECHNICAL SERVICES:

#### CONTROL ROOM

**ELECTRICAL PLANT: 1 X 63A 3F; 8 X 16A F; 6 X 16A 3F;  
2 X 32A F**

**ELECTRICAL PANEL 32A 3F SOCKET; 32A F SOCKET;  
16A F SOCKET**

**GROUP WITH: 63A 3F SOCKET; 32A 3F SOCKET; 16A F**

#### OTHER SERVICES:

**Y AND K FREIGHT ELEVATOR ACCESSES: 5.45X2.65X2.70H M  
6,000KG**

**W AND K ACCESSES TO RAMPS: WIDTH 3.20M HEIGHT 4 M**

**GANGWAYS: WIDTH 1.20 M**

**NR. CHANGING ROOMS: 12**





# Gallery Hall

## Mediolanum Forum



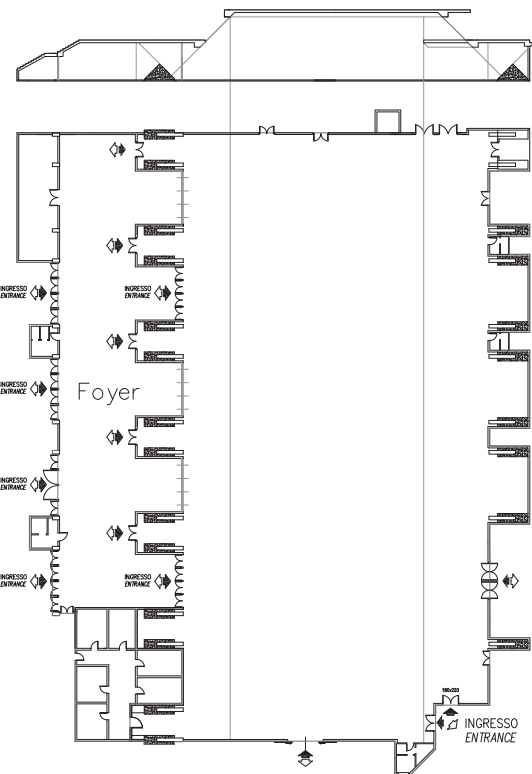
**The Gallery Hall, which is situated at grade level within the structure, has an area of 2,400 sqm and is suited for hosting conventions, gala dinners and fairs.**

It can be used independently or along with the Mediolanum Forum's other halls (Premium Hall and Gold Hall) - which are directly connected to it - to form a space with a total area of 4,600 sqm.

The Gallery Hall can be customised and divided into various sections through the use of mobile dividing walls. It also has a foyer of 600 sqm (which is normally used as a reception), a cloakroom and a welcome area.

The Hall's technical features are also impressive: the audio service guarantees a homogeneous sound distribution throughout the entire space, while the system of motorised trusses facilitates the requirements - in terms of suspended structures - for all types of events.

A dedicated parking area with more than 800 places is situated opposite the Hall.



**HALL 2,400 SQM**

**FOYER 625 SQM**

**MAX HEIGHT 7 M**

**DIMENSIONS 68X34 M**

**AUDIO SYSTEM WITH DELAY EFFECT; CONTROL ROOM**

**MOTORISED TRUSSES AND HOOKS WHICH CAN HOLD SUSPENDED LOADS OF UP TO 350 KG (HOOKS) AND 285 KG (TRUSSES)**

**MAXIMUM CAPACITY: 1600 PEOPLE CONVENTIONS ; 600 PEOPLE EXHIBITIONS**

**ELECTRICAL PLANT: 3F LINE + NEUTRAL 80 KW/380V**



**The Premium Hall of the Mediolanum Forum has an area of 1,600 sqm and a height of 7 metres. It can host up to 1,200 people with an auditorium set-up and 1,000 covers for a gala dinner.**

Its strategic position next to the Gallery Hall enables both halls to be used at the same time for the organisation of larger events, such as fairs.

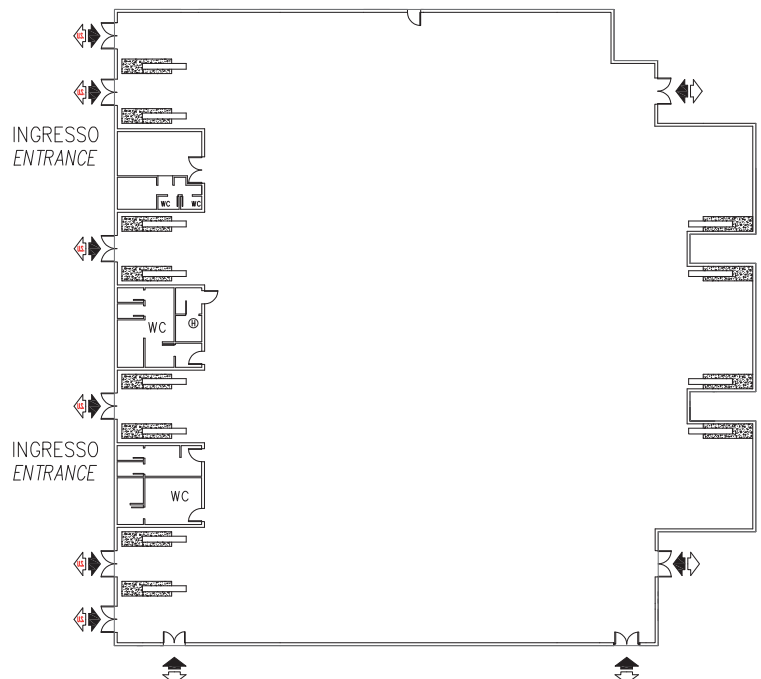
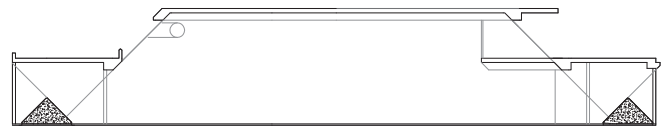
Another feature of the Premium Hall is its position opposite the Teatro della Luna, which makes it particularly suited for pre or after show events or as a support for conventions taking place in the theatre.

The Premium Hall has a dedicated parking area with 450 places.



# Premium Hall

## Mediolanum Forum



**DIMENSIONS 1,600 SQM; M 43 X 30**

**HEIGHT 7 M**

**CAPACITY 1,200 PEOPLE**

**WINDOWS EQUIPPED WITH CENTRALISED DIMMING SYSTEM**

**ELECTRICAL PLANT: 3F LINE + NEUTRAL 80 KW/380 V**



# Gold Hall

## Mediolanum Forum



### DIMENSIONS 600 SQM

### CAPACITY 420 PEOPLE

#### AUDIO SYSTEM:

- 6 RCF ACTIVE LINE ARRAY MODULE NX L 23 A
- 2 RCF FLY BAR NX L 23 A
- 4 RCF ACTIVE SUBWOOFER NX S25 A
- 4 RCF ACTIVE DIFFUSERS NX M 12 A
- 4 RCF WALL SUPPORT NX M 12 A COD. AC PRO12 V-BR
- 1 RCF DIGITAL CONTROL PROCESSOR DX 4008
- 4 RCF ACTIVE STAGE MONITOR DIFFUSERS NX M 12 A

#### MIXER E BACKLINE:

- 1 ROLAND M400 DIGITAL LIVE CONSOLE
- 2 ROLAND 2-1608 BABY DIGITAL SNAKE
- 4 SHURE SM58
- 4 SHURE SM57

The Gold Hall has an area of 600 sqm and is the smallest of the three halls which are situated at grade level within the Mediolanum Forum (Gallery Hall and Premium Hall). It is in a strategic position opposite the Teatro della Luna.

The Hall was recently renovated and includes the Live Forum, a venue for live music which is open to the public. With a dedicated bar area, the Hall is perfect for company events, as well as pre and after show activities and offers the added feature of its own events calendar.

The Gold Hall can host 100 to 400 people or can be used as a private area to support larger events that are organised in the other rooms.

The Gold Hall has a dedicated parking area with more than 200 places.

- 1 AKG DRUM KIT 1
- LANEY GS412PA CABINET FOR GUITAR 240 W
- LANEY GH50L 50 W GUITAR HEAD
- MESA BOOGIE EXPRESS 5:50 COMBO 1X12
- LANEY NEXUS FET650 W
- LANEY NX810 BASS HEAD 1,600 W CABINET FOR BASS
- TAMA SL62HZBNS SCY SH KIT TAMA HP5WN HARDWARE
- 5 PIECE KIT
- TAMA HC73BWN CYMBAL BOOM STAND ZILDJIAN PLATES

#### LIGHTS:

- 8 LED PAR 64
- 4 PAR 64
- 2 LED BARS
- 1 PROEL PLCNDXPS LIGHT MIXER





**Quota Otto is a large modular space that is ideal for organising company dinners, hospitality areas and fairs. It can be divided into four independent rooms Sala Grigia (Grey Room), Sala Blu (Blue Room), Sala Verde (Green Room) and Sala Rossa (Red Room). In addition, there are two terraces of 1,000 and 400 sqm respectively.**

The space of Quota Otto forms a ring around the intermediate level of the Central Arena, which it is connected to through direct and reserved access points, different from those used for the audience during the events.

Thanks to the availability of freight elevators and escalators, the entire space is connected to the rest of the venue to enable more complex set-ups and in order to rationalise the management of flows of guests and visitors.

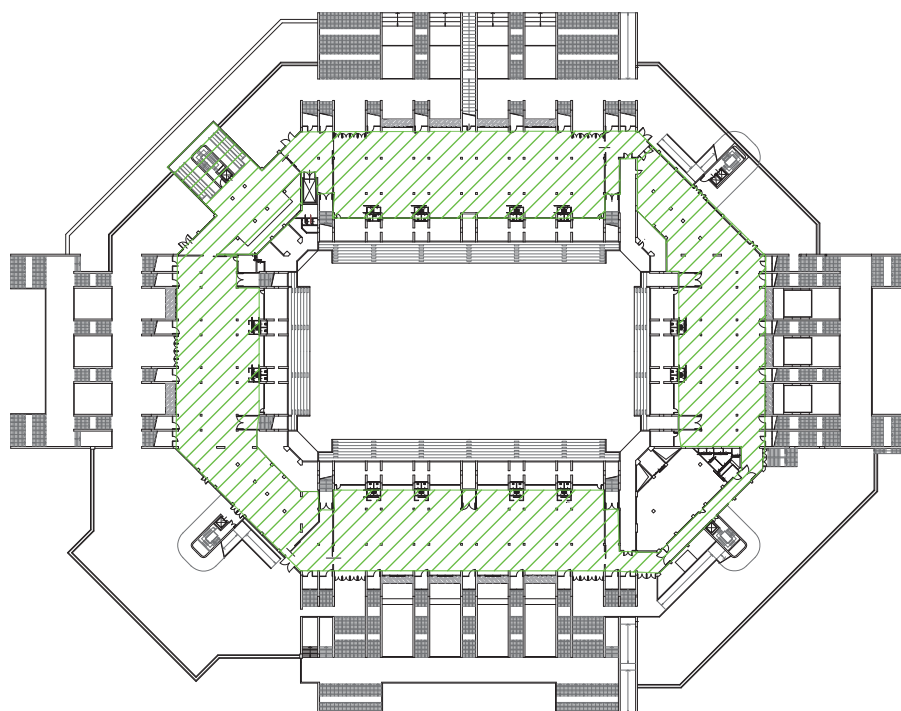
With an overall capacity of more than 2,700 people (with a gala dinner configuration), Quota Otto is particularly suited for use as a support area for large conventions that are hosted within the Central Area.

It also has a large reception (which can be useful for setting administrative areas or cloakrooms). This makes Quota Otto an ideal space for pre or after show company events.



# Quota Otto

## Mediolanum Forum



**SALA ROSSA (RED ROOM) 1,100 SQM**

**SALA VERDE (GREEN ROOM) 1,000 SQM**

**SALA BLU (BLUE ROOM) 1,100 SQM**

**SALA GRIGIA (GREY ROOM) 1,000 SQM**

**HEIGHT 3.40 M**

**THE AREA CAN BE REDUCED WITH DIVIDING SYSTEMS**

**ACCESS TO FREIGHT ELEVATOR Y 5.45X2.65X2.70H M 6,000 KG**





**ForumNet's experience in the management of the largest events guarantees for its clients the utmost support in the search for technical and organisational solutions in order to meet all of their requirements.**

This ranges from logistical assistance to the management of a wide number of qualified suppliers, through to the selection of specialised personnel for activities such as, for example, welcome services, site and event security and portage.

The client also has the opportunity to rent equipment and furnishing of all types, with the assistance of ForumNet's Staff during all the set-up phases.

It is also possible to commission complete company events, such as, for example, team building sessions in the AreaMultisport. The Area is situated within the Mediolanum Forum and with a covered area of 20,000 sqm, which includes a swimming pool and ice-skating rink, it is one of the largest indoor sports venues in Europe.

# Services Mediolanum Forum



**AUDIO-VIDEO SERVICES**

**BANQUETING**

**PRE AND AFTER SHOW ACTIVITIES**

**REFRESHMENT POINTS**

**STAFF FOR WELCOME SERVICES, SECURITY, PORTERAGE AND CLEANING**

**SET-UPS AND TESTS**

**RENTAL OF ALL TYPES OF MATERIALS AND EQUIPMENT**

**SPECIAL RATES WITH THE H2C HOTEL MILANOFIORI**